



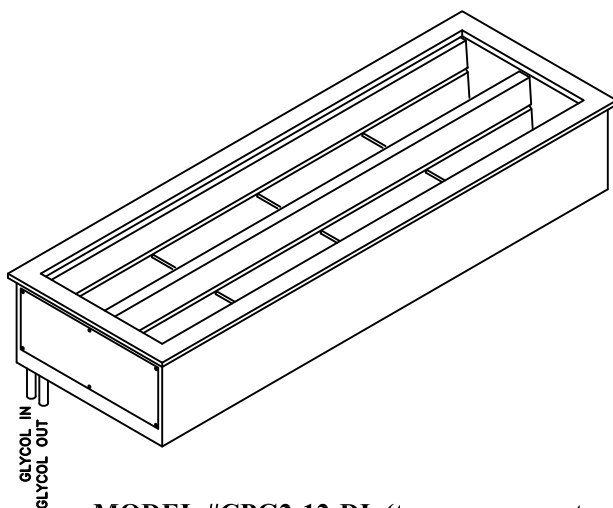
PROJECT: _____

ITEM: _____

QTY: _____

REMOTE GLYCOL PAN CHILLER (TWO ROW PAN SET-UP)

- CPG2-4-DI GLYCOL REMOTE REFRIGERATION
- CPG2-8-DI GLYCOL REMOTE REFRIGERATION
- CPG2-12-DI GLYCOL REMOTE REFRIGERATION
- CPG2-16-DI GLYCOL REMOTE REFRIGERATION
- CPG2-20-DI GLYCOL REMOTE REFRIGERATION



**MODEL #CPG2-12-DI (two row pan set-up)
OPTION: 1" DRAIN**

	MODEL 3-PAN ROW SET-UP	QUANTITY 1/6th PANS
	CPG2-4-DI	4
	CPG2-8-DI	8
	CPG2-12-DI	12
	CPG2-16-DI	16
	CPG2-20-DI	20

CHILL SYSTEM: GLYCOL

SPECIFICATIONS:

Drop-in, remote, cold food well unit (glycol chilled), compliant to NSF-7.
 All stainless steel construction at exposed food zone area of the drop-in unit.
 Unit to accommodate 1/9th, 1/6th and 1/3rd x 6" dp. hotel pans only (three row pan set-up).

FEATURES:

- Drop-in design (9-1/2" minimum depth clearance requirement).
- Refrigerated cold pan designed to hold pre-chilled food product at serving temperature.
- Cold pan's temperature regulated by balancing valve- adjustments done on field for optimum usage.
- Easy access to underside of unit for servicing.
- Stainless steel pan construction with stainless steel glycol railing, foamed in poly-urethane and corrosive resistant steel outer jacket construction (unexposed).

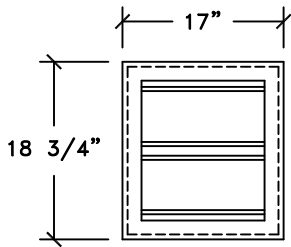
FACTORY ACCESSORIES:

Chiller Includes: 3/4" glycol supply and return line connections, each with isolation ball valve, and balancing valve mounted on return line. (All valves shipped loose for field connections by others)

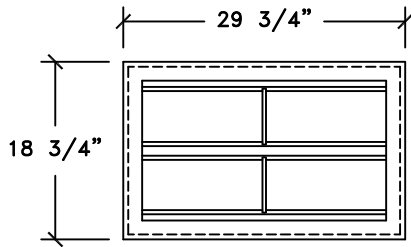
Options Include: * 1" drain (mounted at bottom center of cold pan).
 Please specify on purchase order if required.



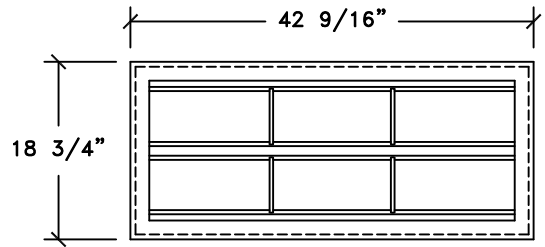
1250 E. FRANKLIN AVE. UNIT B, POMONA, CA 91766 * T: 909-865-2229 * F: 909-868-0777
 sales@cooltecrefrigeration.com * www.cooltecrefrigeration.com



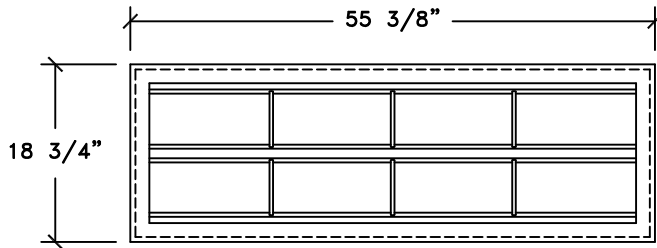
CPG2-4-DI



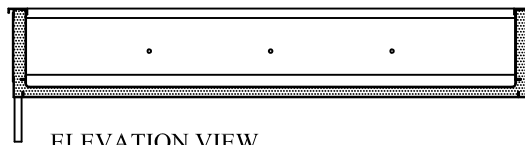
CPG2-8-DI



CPG2-12-DI

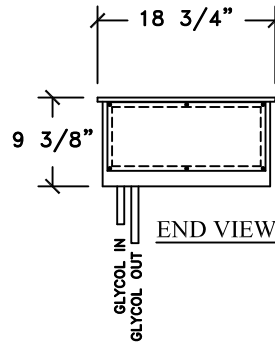


PLAN VIEW

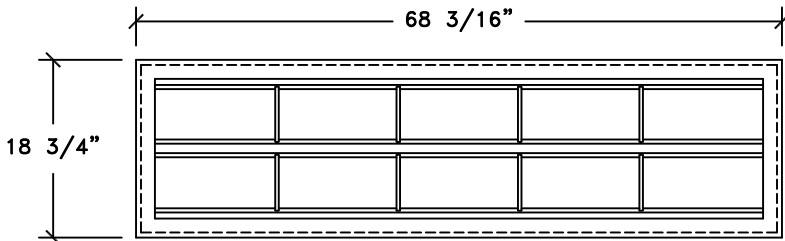


ELEVATION VIEW

CPG2-16-DI



END VIEW



CPG2-20-DI

MODEL	REFRIGERATION		NO. OF PANS 1/6th SIZE PANS 6"x6"x6" DP.	OVER-ALL LENGTH	OVER-ALL WIDTH	OVER-ALL DEPTH	CUT-OUT IN COUNTER TOP	WEIGHT LBS
	BTU RATING	GPM RATING						
CPG2-4-DI	500	0.4	4	17"	18 3/4"	9 3/8"	18" x 16.125"	120
CPG2-8-DI	1100	0.8	8	29 3/4"	18 3/4"	9 3/8"	18" x 29"	150
CPG2-12-DI	1500	1.0	12	42 9/16"	18 3/4"	9 3/8"	18" x 41.75"	180
CPG2-16-DI	1900	1.3	16	55 3/8"	18 3/4"	9 3/8"	18" x 54.625"	210
CPG2-20-DI	2500	1.7	20	68 3/16"	18 3/4"	9 3/8"	18" x 67.375"	240

