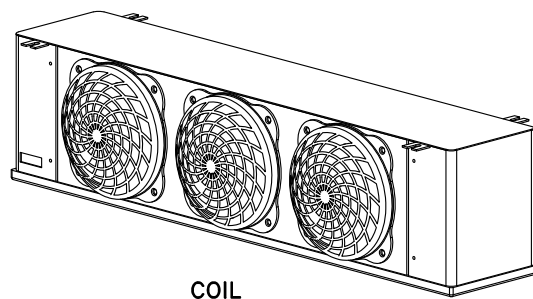
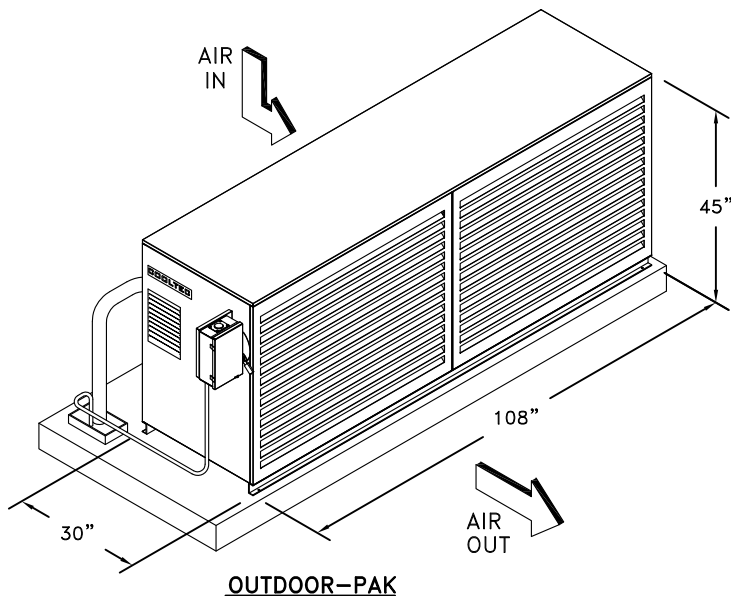


COOLTEC

"OUTDOOR-PAK" AIR COOLED CONDENSING UNITS FOR OUTDOOR APPLICATIONS



FOR MEDIUM & LOW TEMPERATURE APPLICATIONS

TYPICAL APPLICATIONS:

Restaurants, Schools, Cafeterias, Reach-In Units, Display Cases, Grab-N-Go Cases, Under-Counter Refrigerators and Freezers, Walk-In Coolers and Freezers, Cold Pans, and various types of related equipment for food service operations.

CAPACITY RANGE:

1 to 5 condensing Units, Medium and Low Temperature Applications for Hermetic or Scroll Compressors.

FEATURES:

Low Profile Design *Available in Hermetic or Scroll Compressors *Economical to Install *With Weather Protected Enclosure *Available in 208 Volts, Single Phase, 60 Hertz and in 208-230 Volts, Three Phase, 60 Hertz Electrical Service. The outdoor-pak is the most affordable rack from Cooltec's product line when installing multiple condensing units in one single rack.

FACTORY INSTALLED ACCESSORIES:

Outdoor Units Includes:

Condensing unit with pre-assembled liquid line drier and sight glass, suction line vibration eliminator for semi-hermetic units, pressure control, contactor for 3-phase units, 24 hour timer for medium temp units (for cooler defrost application) defrost timer for freezer's electric defrost applications and Fusible Disconnect and control box. Weather housing with removable front louvered panel, removable top cover, crankcase heater and flood back head pressure control.

Unit Cooler Includes:

Wall mount coils, each with thermostat, solenoid valve, and expansion (TX) valve, mounted and wired for one point electrical connection. Optional: ceiling mount coil.

COOLTEC REFRIGERATION CORP.

1250 E. FRANKLIN AVE. UNIT B, POMONA, CA 91766



T: 909-865-2229



F: 909-868-0777

sales@cooltecrefrigeration.com



www.cooltecrefrigeration.com



**OUTDOOR-PAK
AIR COOLED
HERMETIC / SCROLL UNITS
REMOTE-MOUNT OUTDOORS
CONDENSING UNIT & COIL CAPACITY**

ROOF OR OUTDOOR PLATFORM MOUNT

MEDIUM TEMPERATURE				HERMETIC/SCROLL COMPRESSORS					R-404A		WALK-IN COOLER							
CONDENSING UNIT CAPACITY									COIL CAPACITY				TOTAL SYSTEM					
HP	COMPRESSOR MODEL NO. (Copeland)	CAPACITY MBH @ 95°F AMB		ELECTRIC DATA (AMPS) VOLTS/PHASE/60Hz		CONDENSING UNIT DIMENSIONS (INCHES)			COIL QTY	COIL MODEL NO.	RATING @ 1-PH, 60 HZ		LINE SIZE (100' MAX.)		TOTAL SYSTEM AMPS VOLTS/PHASE/60Hz		WT LBS.* CONDENSING UNIT	
		+20°F	+25°F	208-230/1	208-230/3	L	D	H			FAN MOTOR	DEFROST	SUCTION OD	LIQUID OD	208V 1PH	208V 3PH		
											RLA	VOLTS						HTR.RLA 208V/1PH
0.5	RHM05-2S	5.77	6.32	7.65	----	16.3	24.0	13.1	1	ADT-052	0.9	115	----	5/8	3/8	7.65	----	87
0.75	RHM08-2S	7.41	8.1	9.0	----	18.3	24.0	16.1	1	ADT-070	1.8	115	----	7/8	3/8	9.0	----	99
1.0	RHM10-2S	9.10	9.97	9.3	----	18.3	24.0	16.5	1	ADT-090	1.8	115	----	7/8	3/8	9.3	----	107
1.5	RZM15-2T	9.78	10.75	----	8.0	18.3	24.0	16.5	1	ADT-104	1.8	115	----	7/8	3/8	----	8.0	133
1.75	RZM17-2T	11.2	12.25	----	10.4	18.3	24.0	16.5	1	ADT-120	1.8	115	----	7/8	3/8	----	10.4	144
2.0	RZM20-2T	13.1	14.35	----	10.9	34.1	25.2	19.0	1	ADT-130	1.8	115	----	7/8	3/8	----	10.9	250
2.25	RZM22-2T	16.2	17.75	----	10.6	34.1	25.2	19.0	1	ADT-156	2.7	115	----	7/8	1/2	----	10.6	220
3.0	RZM30-2T	18.4	20.2	----	13.7	34.1	25.2	19.0	1	ADT-208	3.6	115	----	7/8	1/2	----	13.7	220
3.25	RZM32-2T	25.0	27.3	----	15.2	34.1	25.2	19.0	1	ADT-260	4.5	115	----	1-1/8	1/2	----	15.2	220
4.0	RZM40-2T	30.6	33.7	----	18.5	44.1	28.2	26.8	1	ADT-312	5.4	115	----	1-1/8	1/2	----	18.5	400
4.25	RZM42-2T	35.1	38.55	----	25.3	44.1	28.2	26.8	1	ADT-370	5.4	115	----	1-1/8	1/2	----	25.3	400
5.0	RZM50-2T	38.0	41.3	----	24.4	44.1	28.2	26.8	2	ADT-180	5.4	115	----	1-3/8	1/2	----	24.4	362

- NOTES: 1. Condensing unit capabilities are 95°F ambient. Cooler temp is at 35°F with 25°F suction gas temp.
 2. Unit cooler and condensing units will have separate power supplies for walk-in cooler applications.
 3. 1MBH=100BTUs/Hour
 4. To add coil, add letter C at the end: -1C for 1 coil, and -2C for 2 coils.
 *WEIGHT IN LBS. FOR CONDENSING UNIT ONLY, DOES NOT INCLUDE ENCLOSURE

LOW TEMPERATURE				HERMETIC/SCROLL COMPRESSORS					R-404A		WALK-IN FREEZER							
CONDENSING UNIT CAPACITY									COIL CAPACITY				TOTAL SYSTEM					
HP	COMPRESSOR MODEL NO. (Copeland)	CAPACITY MBH @ 95°F AMB		ELECTRIC DATA (AMPS) VOLTS/PHASE/60Hz		CONDENSING UNIT DIMENSIONS (INCHES)			COIL QTY	COIL MODEL NO.	RATING @ 1-PH, 60 HZ		LINE SIZE (100' MAX.)		TOTAL SYSTEM AMPS VOLTS/PHASE/60Hz		WT LBS.*	
		-10°F	-20°F	208-230/1	208-230/3	L	D	H			FAN MOTOR	DEFROST	SUCTION OD	LIQUID OD	208V 1PH	208V 3PH		
											RLA	VOLTS						HTR.RLA 208V/1PH
0.5	RHL05-2S	2.89	2.09	7.65	----	16.3	24.0	13.1	1	TL-21	0.5	208	4.8	5/8	3/8	8.15	----	87
0.75	RHL08-2S	3.87	2.98	9.0	----	18.3	24.0	16.1	1	TL-21	0.5	208	4.8	5/8	3/8	9.5	----	99
1.0	RHL10-2S	4.73	3.57	9.3	----	18.3	24.0	16.5	1	LET-035	0.5	208	3.9	7/8	3/8	9.8	----	107
1.5	RZL15-2T	5.38	4.31	----	8.0	18.3	24.0	16.5	1	LET-040	0.5	208	3.9	7/8	3/8	----	8.5	133
1.75	RZL17-2T	6.24	5.01	----	10.4	18.3	24.0	16.5	1	LET-047	0.5	208	3.9	7/8	3/8	----	10.9	144
2.0	RZL20-2T	7.27	5.84	----	10.9	34.1	25.2	19.0	1	LET-047	0.5	208	3.9	7/8	3/8	----	11.4	250
2.25	RZL22-2T	8.91	7.14	----	10.6	34.1	25.2	19.0	1	LET-065	1.0	208	7.8	7/8	3/8	----	11.6	220
3.0	RZL30-2T	10.03	8.04	----	13.7	34.1	25.2	19.0	1	LET-075	1.0	208	7.8	7/8	3/8	----	14.7	220
3.25	RZL32-2T	13.1	10.5	----	15.2	34.1	25.2	19.0	1	LET-090	1.0	208	7.8	7/8	3/8	----	16.2	220
4.0	RZL40-2T	16.4	13.05	----	18.5	44.1	28.2	26.8	1	LET-120	1.5	208	11.7	1-1/8	3/8	----	20.0	400
4.25	RZL42-2T	19.1	15.25	----	25.3	44.1	28.2	26.8	1	LET-140	1.5	208	11.7	1-1/8	3/8	----	26.8	400
5.0	RZL50-2T	21.8	17.65	----	24.4	44.1	28.2	26.8	1	LET-160	2.0	208	15.7	1-1/8	1/2	----	26.4	362

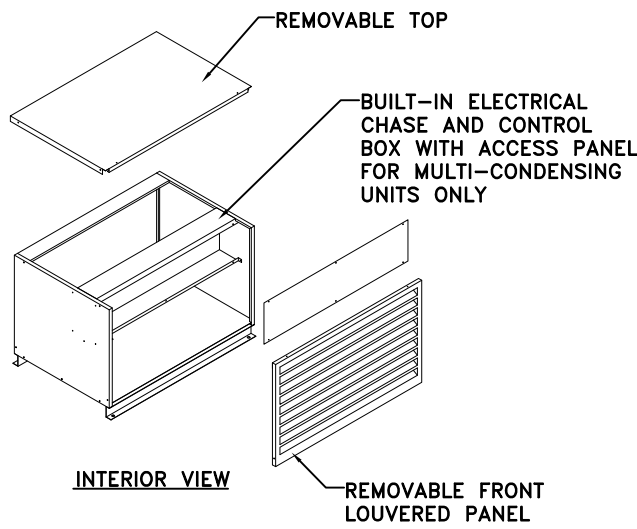
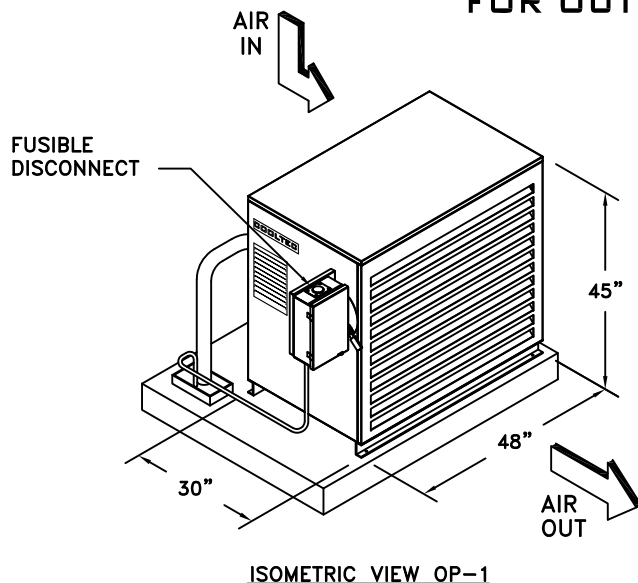
- NOTES: 1. Condensing unit capabilities are 95°F ambient. Freezer is at -10°F with -20°F suction gas temp.
 2. Unit cooler and condensing units will have SAME power supplies for walk-in freezer (low temp.) applications.
 3. 1MBH=100BTUs/Hour
 4. To add coil, add letter C at the end: -1C for 1 coil, and -2C for 2 coils.
 *WEIGHT IN LBS. FOR CONDENSING UNIT ONLY, DOES NOT INCLUDE ENCLOSURE



1250 E. FRANKLIN AVE. UNIT B, POMONA, CA 91766 * T: 909-865-2229 * F: 909-868-0777

sales@cooltecrefrigeration.com * www.cooltecrefrigeration.com

"OUTDOOR-PAK" AIR COOLED CONDENSING UNITS FOR OUTDOOR APPLICATIONS



OP-1 SPECIFICATIONS:

CONDENSER HOUSING FOR MULTIPLE UNITS							
MODEL NO.	HP UNITS		DIMENSIONS			ENCLOSURE WEIGHT IN LBS.	ELECTRICAL
	QTY	HP	LENGTH	DEPTH	HEIGHT		
OP-1	2	1/2 1/2	48"	30"	45"	210	208V/3PH/60HZ
	2	3/4 3/4	48"	30"	45"	210	208V/3PH/60HZ
	2	1.0 1.0	48"	30"	45"	210	208V/3PH/60HZ
	2	1.3 1.3	48"	30"	45"	210	208V/3PH/60HZ
	2	1.5 1.5	48"	30"	45"	210	208V/3PH/60HZ

STANDARD FEATURES:

- ☑ ENCLOSURE AND PANELS ARE FABRICATED OF GALVANIZED STEEL.
- ☑ THE ENTIRE FRAME IS PRE-ASSEMBLED, WELDED, CLEANED, AND PRIMED AND POWDER COATED EPOXY ENAMEL AND BAKED.
- ☑ CONTROL BOX WITH FUSIBLE DISCONNECT
- ☑ PRE-ENGINEERED AND FACTORY ASSEMBLED UNIT



FACTORY INSTALLED ACCESSORIES:

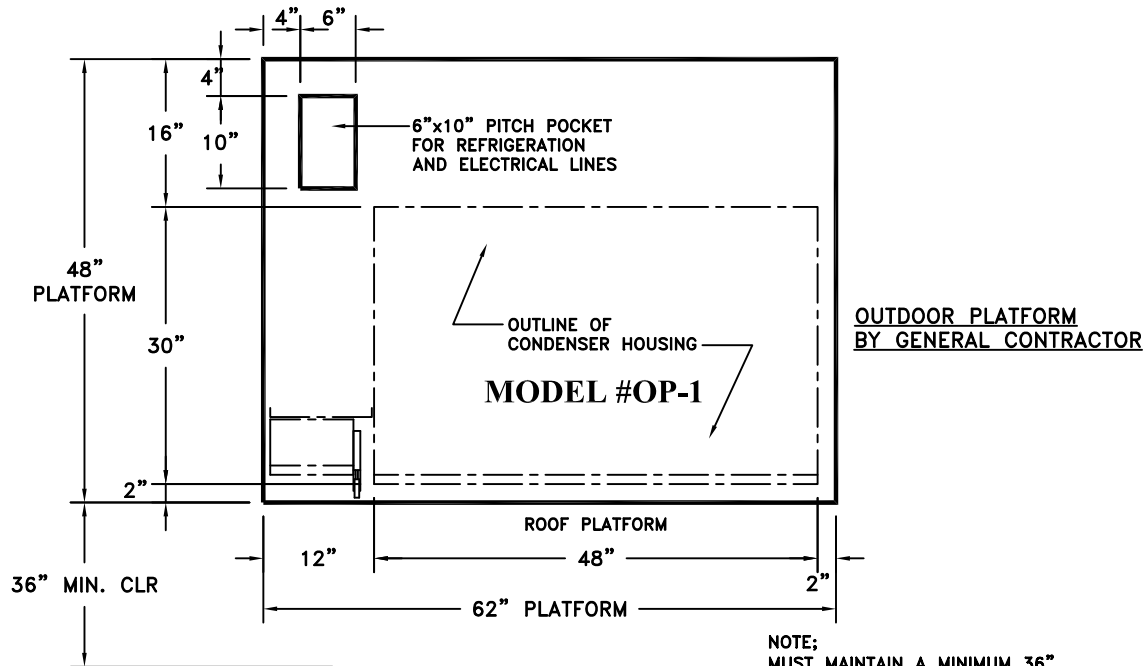
OUTDOOR-PAK UNITS INCLUDES:

CONDENSING UNIT WITH PRE-ASSEMBLED LIQUID LINE DRIER AND SIGHT GLASS, SUCTION LINE VIBRATION ELIMINATOR FOR SEMI-HERMETIC UNITS, PRESSURE CONTROL, CONTACTOR FOR 3-PHASE UNITS, 24 HOUR TIMER FOR MEDIUM TEMP UNITS (FOR COOLER DEFROST APPLICATION) DEFROST TIMER FOR FREEZER'S ELECTRIC DEFROST APPLICATIONS AND FUSIBLE DISCONNECT AND CONTROL BOX. WEATHER HOUSING WITH REMOVABLE FRONT LOUVERED PANEL, REMOVABLE TOP COVER, CRANKCASE HEATER AND FLOOD BACK HEAD PRESSURE CONTROL.

UNIT COOLER INCLUDES:

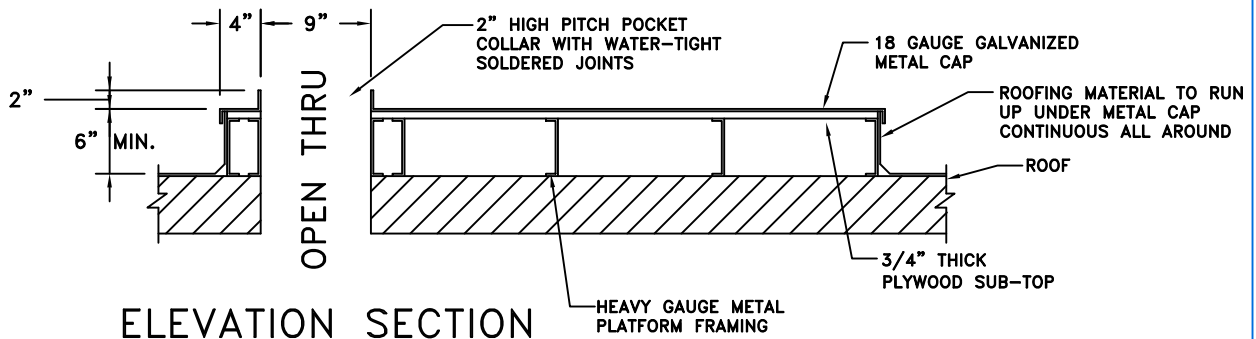
WALL MOUNT COILS, EACH WITH THERMOSTAT, SOLENOID VALVE, AND EXPANSION (TX) VALVE, MOUNTED AND WIRED FOR ONE POINT ELECTRICAL CONNECTION. OPTIONAL: CEILING MOUNT COIL.

COOLTEC



PLAN VIEW

NOTE;
MUST MAINTAIN A MINIMUM 36"
SPACE CLEARANCE IN FRONT OF
FUSIBLE DISCONNECT AND
REFRIGERATION RACK PER CODE
AND FOR SERVICING.



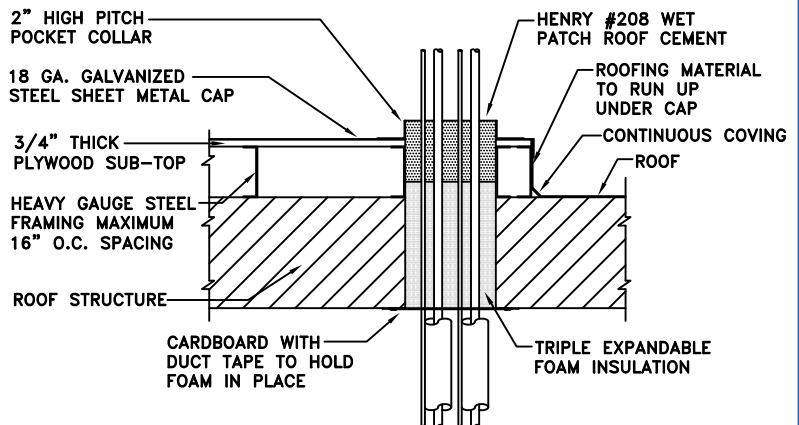
ELEVATION SECTION

GENERAL CONTRACTOR

1. GENERAL CONTRACTOR TO PROVIDE LEVEL PLATFORM AT CODE HEIGHT.
2. PROVIDE PITCH POCKETS IN PLATFORM AS LOCATED.
3. PROVIDE A SHEET METAL CAP WITH 2" HIGH PITCH POCKET COLLARS, EACH WITH WATER TIGHT SOLDERED JOINTS

REFRIGERATION CONTRACTOR

1. AFTER INSTALLATION OF RACK, ELECTRICAL CONNECTIONS AND REFRIGERATION LINE CONNECTIONS, REFRIGERATION CONTRACTOR TO BACK FILL EACH PITCH POCKET OPENING WITH EXPANDED FOAM AND ROOF SEALANT.



OUTDOOR PLATFORM BY GENERAL CONTRACTOR

COOLTEC REFRIGERATION CORP.

1250 E. FRANKLIN AVE. UNIT B, POMONA, CA 91766



T: 909-865-2229



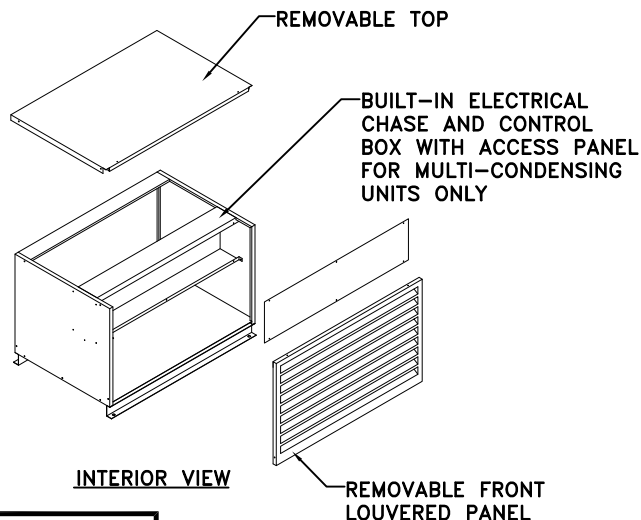
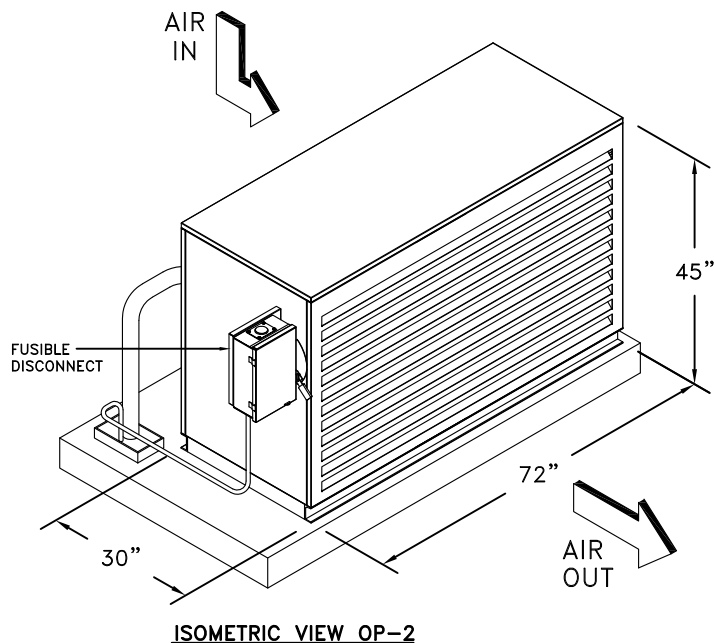
F: 909-868-0777

sales@cooltecrefrigeration.com



www.cooltecrefrigeration.com

"OUTDOOR-PAK" AIR COOLED CONDENSING UNITS FOR OUTDOOR APPLICATIONS



OP-2 SPECIFICATIONS:

CONDENSER HOUSING FOR MULTIPLE UNITS								
MODEL NO.	HP UNITS			DIMENSIONS			ENCLOSURE WEIGHT IN LBS.	ELECTRICAL
	QTY	HP		LENGTH	DEPTH	HEIGHT		
OP-2	2	1/2	2.0	72"	30"	45"	290	208V/3PH/60HZ
	2	3/4	2.5	72"	30"	45"	290	208V/3PH/60HZ
	2	1.0	3.0	72"	30"	45"	290	208V/3PH/60HZ
	2	1.5	3.5	72"	30"	45"	290	208V/3PH/60HZ
	3	1.5	1.5	1.5	72"	30"	45"	290

STANDARD FEATURES:

- ☑ ENCLOSURE AND PANELS ARE FABRICATED OF GALVANIZED STEEL.
- ☑ THE ENTIRE FRAME IS PRE-ASSEMBLED, WELDED, CLEANED, AND PRIMED AND POWDER COATED EPOXY ENAMEL AND BAKED.
- ☑ CONTROL BOX, WITH FUSIBLE DISCONNECT
- ☑ PRE-ENGINEERED AND FACTORY ASSEMBLED UNIT

FACTORY INSTALLED ACCESSORIES:

OUTDOOR-PAK UNITS INCLUDES:

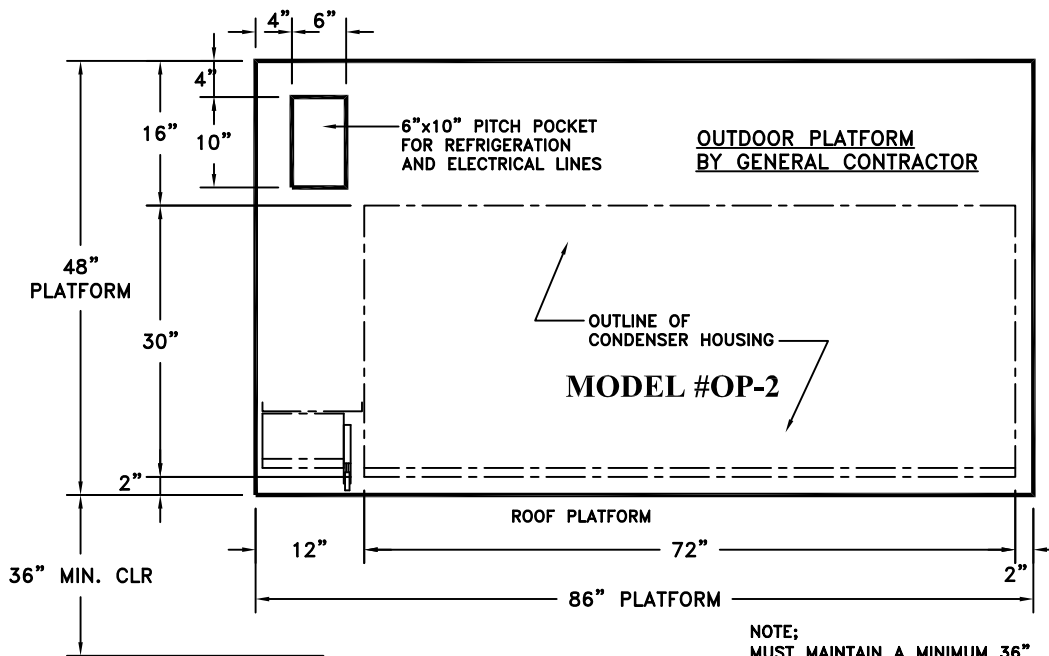
CONDENSING UNIT WITH PRE-ASSEMBLED LIQUID LINE DRIER AND SIGHT GLASS, SUCTION LINE VIBRATION ELIMINATOR FOR SEMI-HERMETIC UNITS, PRESSURE CONTROL, CONTACTOR FOR 3-PHASE UNITS, 24 HOUR TIMER FOR MEDIUM TEMP UNITS (FOR COOLER DEFROST APPLICATION) DEFROST TIMER FOR FREEZER'S ELECTRIC DEFROST APPLICATIONS AND FUSIBLE DISCONNECT AND CONTROL BOX. WEATHER HOUSING WITH REMOVABLE FRONT LOUVERED PANEL, REMOVABLE TOP COVER, CRANKCASE HEATER AND FLOOD BACK HEAD PRESSURE CONTROL.

UNIT COOLER INCLUDES:

WALL MOUNT COILS, EACH WITH THERMOSTAT, SOLENOID VALVE, AND EXPANSION (TX) VALVE, MOUNTED AND WIRED FOR ONE POINT ELECTRICAL CONNECTION. OPTIONAL: CEILING MOUNT COIL.

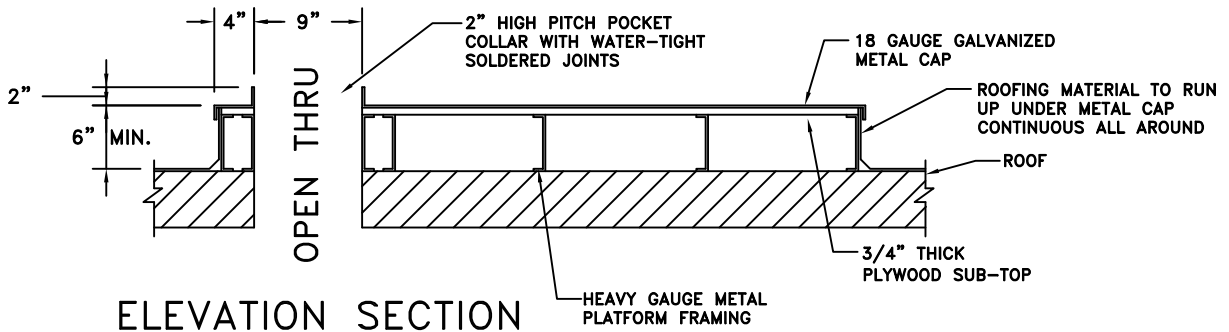


COOLTEC



PLAN VIEW

NOTE:
MUST MAINTAIN A MINIMUM 36" SPACE CLEARANCE IN FRONT OF FUSIBLE DISCONNECT AND REFRIGERATION RACK PER CODE AND FOR SERVICING.



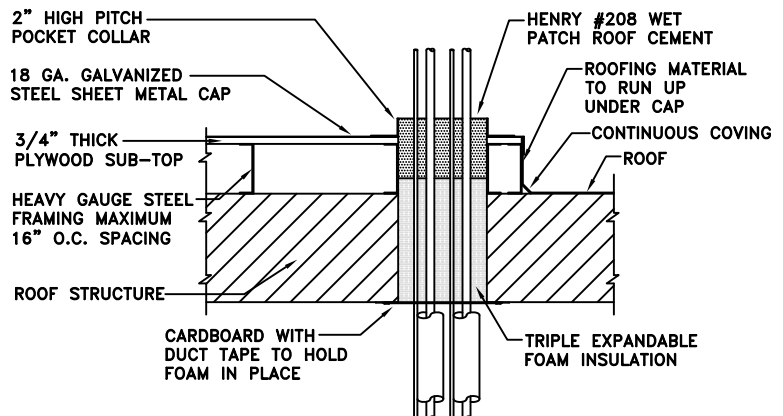
ELEVATION SECTION

GENERAL CONTRACTOR

1. GENERAL CONTRACTOR TO PROVIDE LEVEL PLATFORM AT CODE HEIGHT.
2. PROVIDE PITCH POCKETS IN PLATFORM AS LOCATED.
3. PROVIDE A SHEET METAL CAP WITH 2" HIGH PITCH POCKET COLLARS, EACH WITH WATER TIGHT SOLDERED JOINTS

REFRIGERATION CONTRACTOR

1. AFTER INSTALLATION OF RACK, ELECTRICAL CONNECTIONS AND REFRIGERATION LINE CONNECTIONS, REFRIGERATION CONTRACTOR TO BACK FILL EACH PITCH POCKET OPENING WITH EXPANDED FOAM AND ROOF SEALANT.



OUTDOOR PLATFORM BY GENERAL CONTRACTOR

COOLTEC REFRIGERATION CORP.

1250 E. FRANKLIN AVE. UNIT B, POMONA, CA 91766



T: 909-865-2229



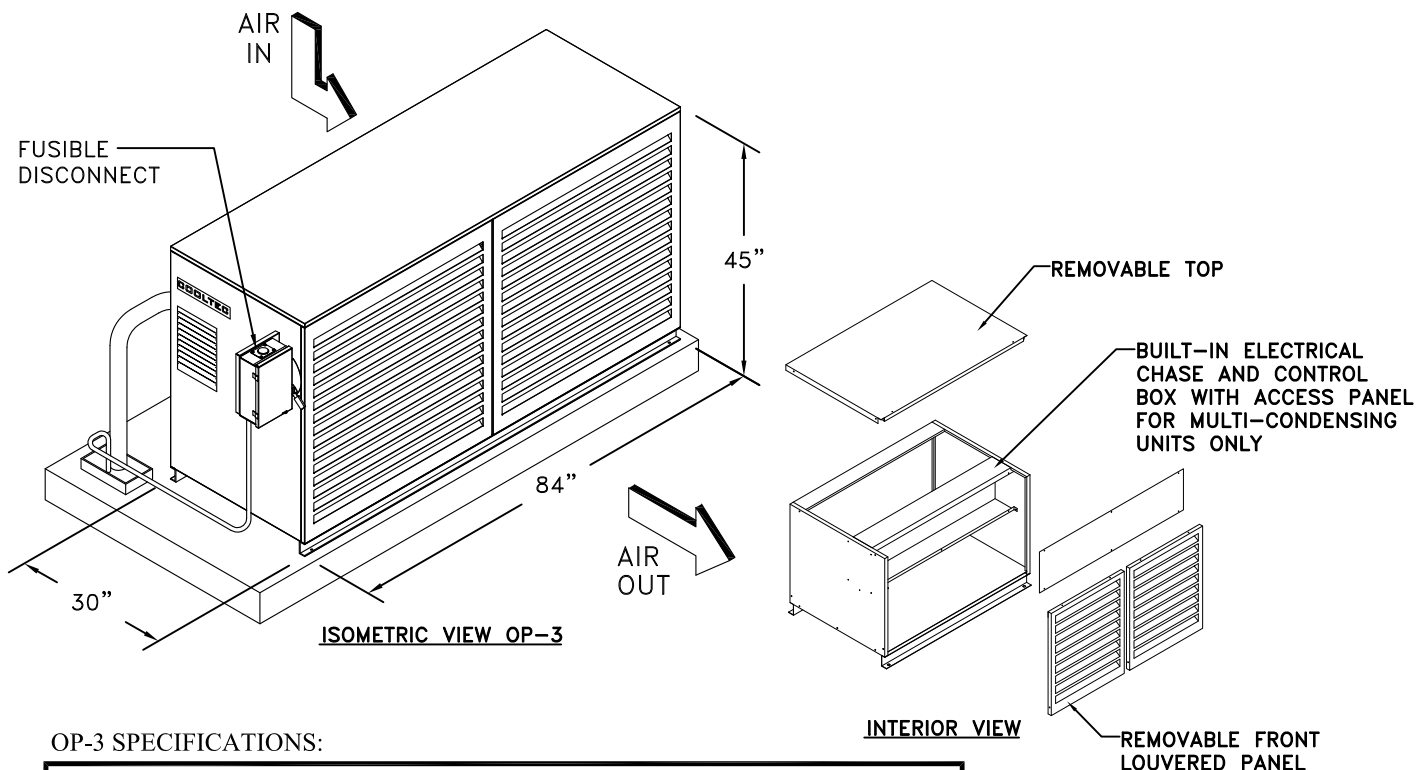
F: 909-868-0777

sales@cooltecrefrigeration.com



www.cooltecrefrigeration.com

"OUTDOOR-PAK" AIR COOLED CONDENSING UNITS FOR OUTDOOR APPLICATIONS



OP-3 SPECIFICATIONS:

CONDENSER HOUSING FOR MULTIPLE UNITS										
MODEL NO.	HP UNITS				DIMENSIONS			ENCLOSURE WEIGHT IN LBS.	ELECTRICAL	
	QTY	HP			LENGTH	DEPTH	HEIGHT			
OP-3	2	3.5	3.5		84"	30"	45"	330	208V/3PH/60HZ	
	3	1.5	3.5	1.5	84"	30"	45"	330	208V/3PH/60HZ	
	4	1.5	1.5	1.5	84"	30"	45"	330	208V/3PH/60HZ	
	4	1.0	1.5	1.0	1.5	84"	30"	45"	330	208V/3PH/60HZ
	4	1.0	1.0	1.0	1.0	84"	30"	45"	330	208V/3PH/60HZ

STANDARD FEATURES:

- ☑ ENCLOSURE AND PANELS ARE FABRICATED OF GALVANIZED STEEL.
- ☑ THE ENTIRE FRAME IS PRE-ASSEMBLED, WELDED, CLEANED, AND PRIMED AND POWDER COATED EPOXY ENAMEL AND BAKED.
- ☑ CONTROL BOX, WITH FUSIBLE DISCONNECT
- ☑ PRE-ENGINEERED AND FACTORY ASSEMBLED UNIT



FACTORY INSTALLED ACCESSORIES:

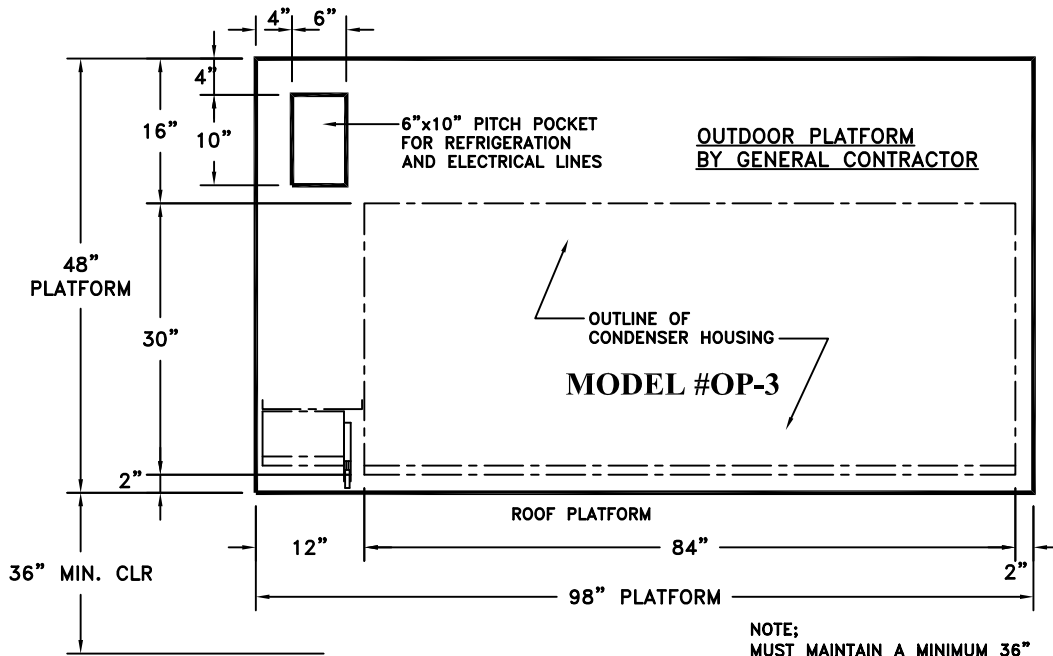
OUTDOOR-PAK UNITS INCLUDES:

CONDENSING UNIT WITH PRE-ASSEMBLED LIQUID LINE DRIER AND SIGHT GLASS, SUCTION LINE VIBRATION ELIMINATOR FOR SEMI-HERMETIC UNITS, PRESSURE CONTROL, CONTACTOR FOR 3-PHASE UNITS, 24 HOUR TIMER FOR MEDIUM TEMP UNITS (FOR COOLER DEFROST APPLICATION) DEFROST TIMER FOR FREEZER'S ELECTRIC DEFROST APPLICATIONS AND FUSIBLE DISCONNECT AND CONTROL BOX. WEATHER HOUSING WITH REMOVABLE FRONT LOUVERED PANEL, REMOVABLE TOP COVER, CRANKCASE HEATER AND FLOOD BACK HEAD PRESSURE CONTROL.

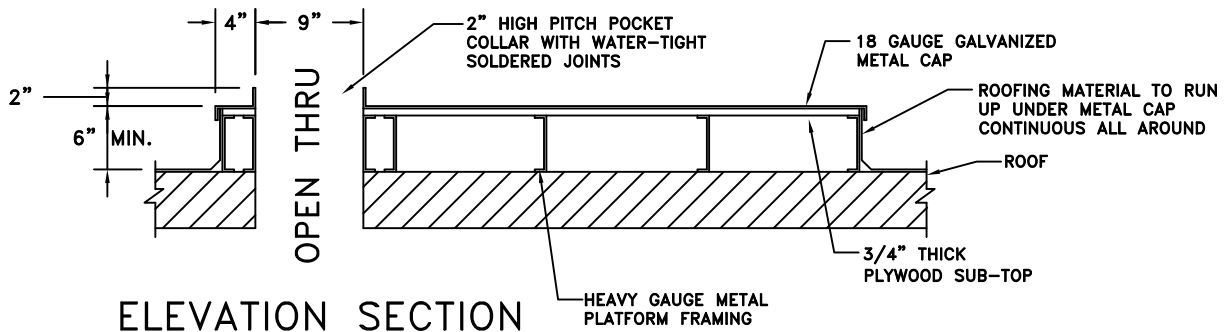
UNIT COOLER INCLUDES:

WALL MOUNT COILS, EACH WITH THERMOSTAT, SOLENOID VALVE, AND EXPANSION (TX) VALVE, MOUNTED AND WIRED FOR ONE POINT ELECTRICAL CONNECTION. OPTIONAL: CEILING MOUNT COIL.

COOLTEC



NOTE:
MUST MAINTAIN A MINIMUM 36"
SPACE CLEARANCE IN FRONT OF
FUSIBLE DISCONNECT AND
REFRIGERATION RACK PER CODE
AND FOR SERVICING.

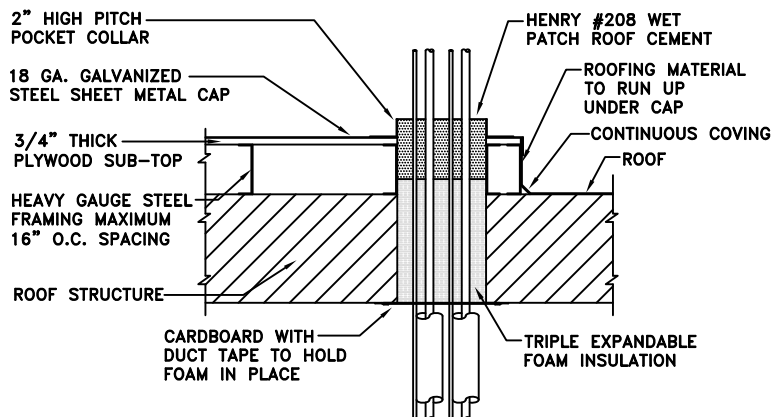


GENERAL CONTRACTOR

1. GENERAL CONTRACTOR TO PROVIDE LEVEL PLATFORM AT CODE HEIGHT.
2. PROVIDE PITCH POCKETS IN PLATFORM AS LOCATED.
3. PROVIDE A SHEET METAL CAP WITH 2" HIGH PITCH POCKET COLLARS, EACH WITH WATER TIGHT SOLDERED JOINTS

REFRIGERATION CONTRACTOR

1. AFTER INSTALLATION OF RACK, ELECTRICAL CONNECTIONS AND REFRIGERATION LINE CONNECTIONS, REFRIGERATION CONTRACTOR TO BACK FILL EACH PITCH POCKET OPENING WITH EXPANDED FOAM AND ROOF SEALANT.



OUTDOOR PLATFORM BY GENERAL CONTRACTOR

COOLTEC REFRIGERATION CORP.

1250 E. FRANKLIN AVE. UNIT B, POMONA, CA 91766



T: 909-865-2229



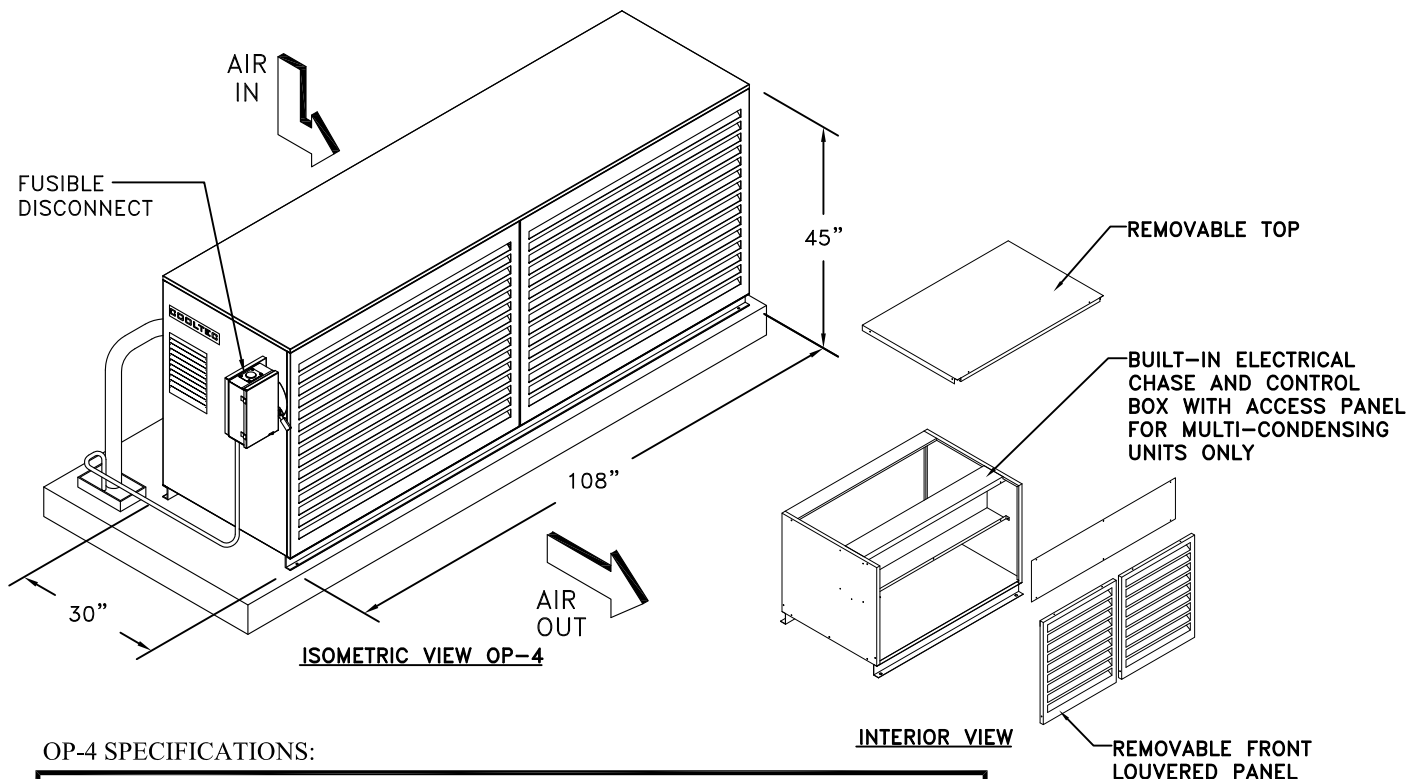
F: 909-868-0777

sales@cooltecrefrigeration.com



www.cooltecrefrigeration.com

"OUTDOOR-PAK" AIR COOLED CONDENSING UNITS FOR OUTDOOR APPLICATIONS



OP-4 SPECIFICATIONS:

CONDENSER HOUSING FOR MULTIPLE UNITS											
MODEL NO.	HP UNITS				DIMENSIONS			ENCLOSURE WEIGHT IN LBS.	ELECTRICAL		
	QTY	HP			LENGTH	DEPTH	HEIGHT				
OP-4	2	5.0	5.0		108"	30"	45"	410	208V/3PH/60HZ		
	3	3.5	1.5	3.5	108"	30"	45"	410	208V/3PH/60HZ		
	4	3.5	1.5	1.5	1.5	108"	30"	45"	410	208V/3PH/60HZ	
	5	1.0	1.5	1.0	1.5	1.0	108"	30"	45"	410	208V/3PH/60HZ
	5	1.5	1.5	1.0	1.5	1.5	108"	30"	45"	410	208V/3PH/60HZ

STANDARD FEATURES:

- ☑ ENCLOSURE AND PANELS ARE FABRICATED OF GALVANIZED STEEL.
- ☑ THE ENTIRE FRAME IS PRE-ASSEMBLED, WELDED, CLEANED, AND PRIMED AND POWDER COATED EPOXY ENAMEL AND BAKED.
- ☑ CONTROL BOX, WITH FUSIBLE DISCONNECT
- ☑ PRE-ENGINEERED AND FACTORY ASSEMBLED UNIT



FACTORY INSTALLED ACCESSORIES:

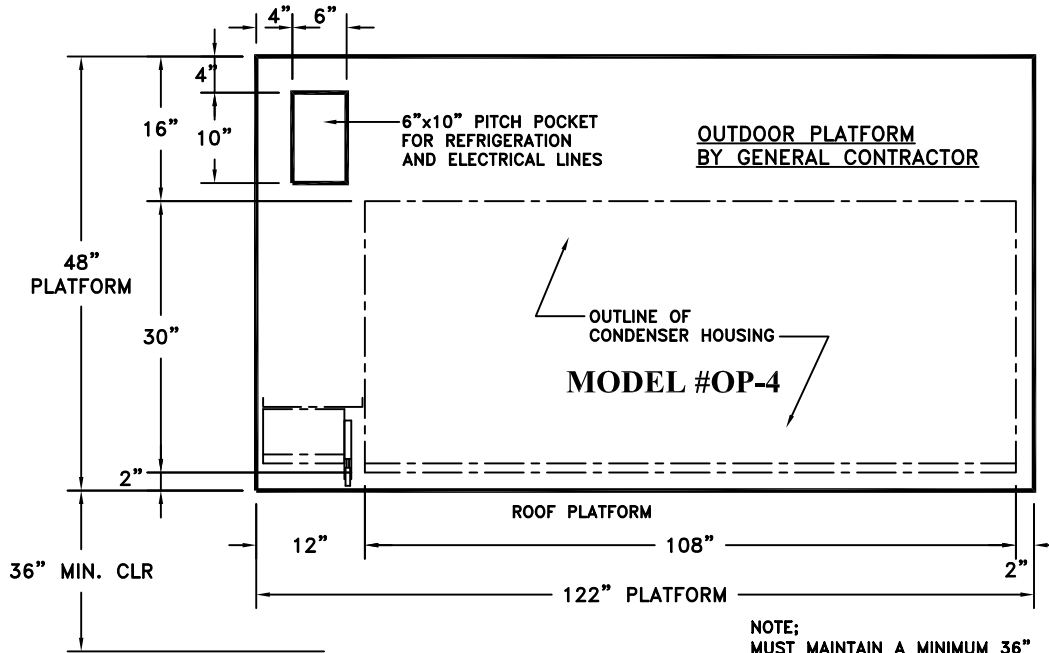
OUTDOOR-PAK UNITS INCLUDES:

CONDENSING UNIT WITH PRE-ASSEMBLED LIQUID LINE DRIER AND SIGHT GLASS, SUCTION LINE VIBRATION ELIMINATOR FOR SEMI-HERMETIC UNITS, PRESSURE CONTROL, CONTACTOR FOR 3-PHASE UNITS, 24 HOUR TIMER FOR MEDIUM TEMP UNITS (FOR COOLER DEFROST APPLICATION) DEFROST TIMER FOR FREEZER'S ELECTRIC DEFROST APPLICATIONS AND FUSIBLE DISCONNECT AND CONTROL BOX. WEATHER HOUSING WITH REMOVABLE FRONT LOUVERED PANEL, REMOVABLE TOP COVER, CRANKCASE HEATER AND FLOOD BACK HEAD PRESSURE CONTROL.

UNIT COOLER INCLUDES:

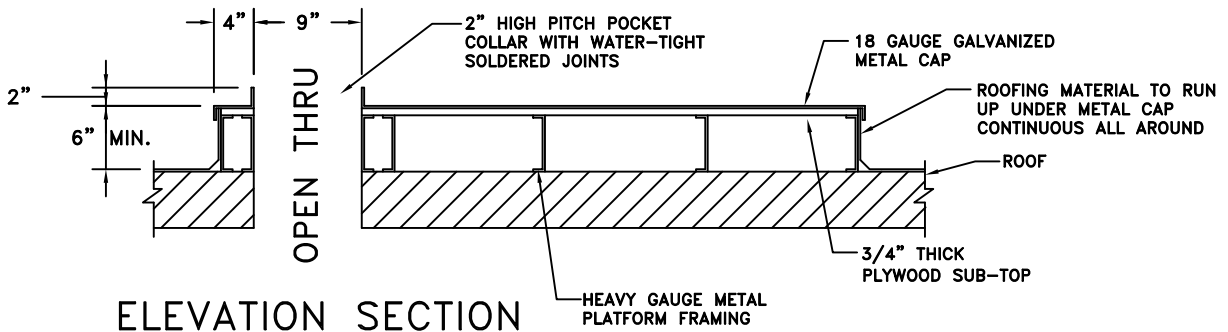
WALL MOUNT COILS, EACH WITH THERMOSTAT, SOLENOID VALVE, AND EXPANSION (TX) VALVE, MOUNTED AND WIRED FOR ONE POINT ELECTRICAL CONNECTION. OPTIONAL: CEILING MOUNT COIL.

COOLTEC



PLAN VIEW

NOTE:
MUST MAINTAIN A MINIMUM 36" SPACE CLEARANCE IN FRONT OF FUSIBLE DISCONNECT AND REFRIGERATION RACK PER CODE AND FOR SERVICING.



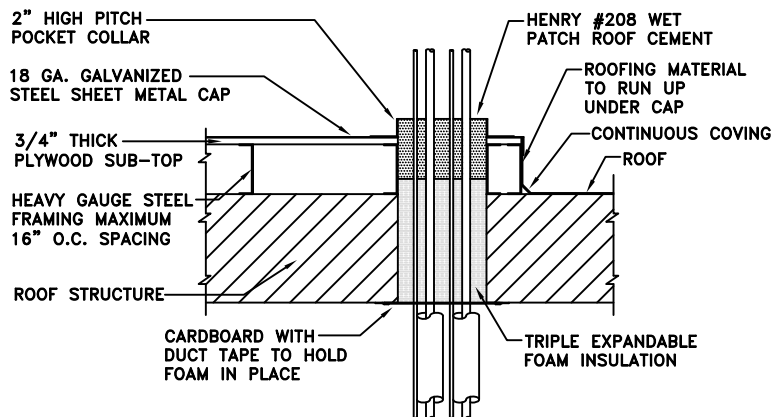
ELEVATION SECTION

GENERAL CONTRACTOR

1. GENERAL CONTRACTOR TO PROVIDE LEVEL PLATFORM AT CODE HEIGHT.
2. PROVIDE PITCH POCKETS IN PLATFORM AS LOCATED.
3. PROVIDE A SHEET METAL CAP WITH 2" HIGH PITCH POCKET COLLARS, EACH WITH WATER TIGHT SOLDERED JOINTS

REFRIGERATION CONTRACTOR

1. AFTER INSTALLATION OF RACK, ELECTRICAL CONNECTIONS AND REFRIGERATION LINE CONNECTIONS, REFRIGERATION CONTRACTOR TO BACK FILL EACH PITCH POCKET OPENING WITH EXPANDED FOAM AND ROOF SEALANT.



OUTDOOR PLATFORM BY GENERAL CONTRACTOR

COOLTEC REFRIGERATION CORP.

1250 E. FRANKLIN AVE. UNIT B, POMONA, CA 91766



T: 909-865-2229



F: 909-868-0777

sales@cooltecrefrigeration.com



www.cooltecrefrigeration.com

COOLTEC

“OUTDOOR-PAK” MULTI-COMPRESSOR RACK WITH AIR COOLED CONDENSING UNITS

ITEM NO. _____ OUTDOOR AIR COOLED REFRIGERATION PACKAGE

The refrigeration package shall be pre-engineered and factory assembled unit, trade name "OUTDOOR-PAK", as manufactured by **COOLTEC REFRIGERATION CORP.**, 1250 E. Franklin Ave. Unit B, Pomona, ca 91766. phone: (909) 865-2229, fax: (909) 868-0777. e-mail address: sales@cooltecrefrigeration.com

Contractor shall furnish and install, where shown on plans, (1) **COOLTEC** U.L. approved "OUTDOOR-PAK" air cooled remote refrigeration package, model_____, with control panel, 208 volts, 3 phase, 60 hertz. Refrigeration system shall be housed in a weather protected enclosure. The frame, enclosure, and panels shall be fabricated of galvanized steel. The entire frame shall be pre-assembled, welded, cleaned, and primed and powder coated epoxy enamel and baked. The condenser shall be removable, with rifled tube slotted finned. Each condenser shall be equipped with fan motor for better heat transfer thru enclosure.

1. REFRIGERATION UNITS

- A. Air-cooled condensing units shall be hermetic/scroll type (copeland). Each unit shall be equipped with high-low pressure control, liquid line drier, sight glass, head pressure control, time clocks and pump down solenoids.
- B. All compressor units shall be new factory assembled to operate with the refrigerant specified in the engineering summary sheet. Refrigerant R-404a shall be used on all commercial temperature units and low temperature units.

2. PRE-PIPING

- A. All refrigerant lines shall be extended to back side of the package in a neat and orderly manner. Suction lines must be insulated with armaflox (1" thick for low temp, 3/4" thick for medium temp).
- B. All tubing shall be securely supported and anchored with clamps.
- C. Silver solder and/or sil-fos shall be used for all refrigerant piping. soft solder is not acceptable.
- D. All piping to be pressure tested with nitrogen at 300 psi. After the condensing unit and coil have been connected, the balance of the system shall be leaked tested with all valves opened.

3. CONTROL PANEL

- A. The package shall have a factory mounted and pre-wired control panel with main fused disconnect. Compressor circuit breakers, contactors and the time clocks wired for single point connection.
- B. Electrical contractor shall provide and install main power lines to panel and provide wiring for control and defrost heater between and the defrost clock and the refrigeration fixtures, all in accordance with the wiring diagram and per local codes.

4. SAFETY CAUTION

- A. Each system and evaporator is shipped under nitrogen pressure. Use caution and exercise safety at all times when preparing for final hook-up.

5. EVAPORATIVE COIL

- A. Evaporative coils shall be direct expansion type, fabricated of copper tubes with aluminum fins. All evaporative coils shall be provided with solenoid valve, thermostatic expansion valve, and electronic thermostat, piped and wired to the junction box for positive pump down.
- B. Evaporative coils shall be equipped with energy saving "ec" motors.

COOLTEC REFRIGERATION CORP.

1250 E. FRANKLIN AVE. UNIT B, POMONA, CA 91766



T: 909-865-2229



F: 909-868-0777

sales@cooltecrefrigeration.com



www.cooltecrefrigeration.com

COOLTEC

CONSTRUCTION NOTES FOR TRADES

1. GENERAL CONTRACTORS

- A. Contractors shall verify all dimensions and coordinate with other trades and co-ordinate location of refrigeration rack with refrigeration contractor to satisfy local code requirements and maintenance of the rack.
- B. General contractor to verify refrigeration line runs thru to roof or multi-story building prior to construction with refrigeration contractor for accessibility.
- C. General contractor shall prepare and weather proof the platform and curbed openings for refrigeration piping and electrical conduit. Roof pad to be constructed of heavy duty steel framing, and the finished height dictated per local codes. Provide sheet metal cap with 2" high pitch pocket collar and water tight soldered joints.
- D. All core drilling required for remote refrigeration piping work by the refrigeration contractor, is in the general contractor's scoop of work. Coordinate exact location and number of penetrations with the refrigeration contractor and comply with all landlord requirements for x-ray of slab prior to work.
- E. General contractor to backfill all pitch pockets to top with tar or pitch after refrigeration and electrical lines have been run.

2. REFRIGERATION CONTRACTOR

- A. All copper tubing to be refrigerant grade A.C.R. or TYPE "L".
- B. Silver solder and/or sil-fos shall be used on all refrigerant piping. Soft solder is NOT acceptable.
- C. All piping to be pressure tested with nitrogen at 300 PSI. After the condensing unit and coil have been connected, the balance of the system shall be leak tested with all valves open.
- D. The complete system shall be evacuated with a vacuum pump.
- E. Charge, test, and adjust each unit.
- F. Refrigerant contractor to provide and install drain-line. Heater in freezer to be connected by electrical contractor.
- G. Refrigerant suction lines outside of refrigerated compartments, which are not run in conduit, shall be insulated back to compressor with Armstrong Arma-Flex AP- 25/50 foam plastic insulation or equal in accordance with direction of the manufacturer. Minimum thickness shall be 3/4 inch for commercial temperature and 1 inch for low temperature.

3. ELECTRIC CONTRACTOR

- A. Electrical contractor shall provide power for refrigerant package, and connect control and defrost system as called for in the wiring diagram.
- B. Electrical contractor to provide 4-wire color coded service from the time-clock at the refrigeration package to blower coil in fixture for automatic defrost.
- C. Electrical contractor to connect drain-line heater in freezer.
- D. All electrical wiring and installation shall be in accordance with the wiring diagram and local codes.

4. PLUMBING CONTRACTOR

- A. Plumbing contractor to provide type "M" copper drain or walk-in refrigerator and freezer, pitched 1/4" per foot of run. In freezer, unheated drain line must be outside of insulation to prevent freezing. Trap drain line outside of refrigerated space to avoid entrance of warm and moist air.
- B. Plumbing contractor to provide individual drain line for each evaporator, unless otherwise called for.
- C. All plumbing installation shall be in accordance with local code.

REPRESENTED BY:

Since product improvement is a continuing effort with the engineers at COOLTEC Refrigeration Corp. we reserve the right to make changes in specifications without notice.
© 2014 COOLTEC Refrigeration Corp.

COOLTEC REFRIGERATION CORP.

1250 E. FRANKLIN AVE. UNIT B, POMONA, CA 91766 * T: 909-865-2229 * F: 909-868-0777

sales@cooltecrefrigeration.com * www.cooltecrefrigeration.com